

Sateira CD&DVD Burner is a full-featured package for Audio and Data CD / DVD burning. Package includes four stand-alone software products: [Data Burner](#), [Audio Burner](#), [Cue Burner](#), [DropToCD Lite](#) and [Session Commander](#).

Data Burner is a professional product for Data CD / DVD creation and burning. With this program you can create and burn bootable CD / DVD or ISO images, multisession CD / DVD, erase rewritable CD / DVD, burn ISO images directly.

Audio Burner is an easy-to-use product for Audio CD creation (from wavs) and burning.

Cue Burner is a little utility for directly CUE / BIN images burning.

DropToCD Lite is a very easy-to-use tool for Data CD / DVD creation and burning. With this program you can fast backup your files and folders to CD / DVD.

Session Commander is a special utility for viewing and extracting files and folders of sessions from multisession CD / DVD.

Features and Benefits:

- Supports CD-R / CD-RW / DVD-R / DVD-RW / DVD+R / DVD+RW / DVD-RAM
- Tested with SCSI, IDE / EIDE, USB CD / DVD recorders
- On the fly burning. No need to build ISO image first. No temporary files
- Small package size, fast work and easy-to-use interface
- Supports long filenames and folder names (max 108 characters)
- Burn over 200000 files and 70000 folders
- Create multisession CD / DVD. Import any of the available previous session
- Doesn't use any dlls or ocxs. Built-in ASPI layer
- Professional disc layout editor
- Displays necessary information about recorder and disc
- Fast ISO image building speed
- Supports ISO9660 / Joliet file systems, burning simulation, OPC, BURNProof...
- ...and more

Sateira CD&DVD Burner®

Copyright © 2002-2004 Sateira Software

All rights reserved.

Sateira CD&DVD Burner is shareware. This means:

1. You can use it freely to evaluate it until trial expiration.
2. All copyrights to Sateira CD&DVD Burner are exclusively owned by the Sateira Software.
3. The unregistered trial version may be freely distributed, with exceptions noted below, provided the distribution package is not modified in any way.

No person or company may distribute separate parts of the package with the exception of the Sateira CD&DVD Burner components, without written permission of the copyright owner.

The unregistered trial version of Sateira CD&DVD Burner may not be distributed inside of any other software package without written permission of the copyright owner.

Hacks/cracks, keys or key generators may not be included on the same distribution.

4. Sateira CD&DVD Burner is distributed "as is". No warranty of any kind is expressed or implied. You use at your own risk. Neither the author or the agents of the author will be liable for data loss, damages, loss of profits or any other kind of loss while using or misusing this software.

5. You may not use, copy, emulate, clone, rent, lease, sell, modify, decompile, disassemble, otherwise reverse engineer, or transfer the licensed program, or any subset of the licensed program, except as provided for in this agreement. Any such unauthorized use shall result in immediate and automatic termination of this license and may result in criminal and/or civil prosecution.

All rights not expressly granted here are reserved by Sateira Software.

If you decide that you would like to continue using Sateira CD&DVD Burner, please register your copy.

Your registration will license you to use your copy of Sateira CD&DVD Burner, will support work on future versions, new features, and bug fixes, and will provide you with technical support via email.

7 days trial

Free trial period ends in 7 days after you installed Sateira CD&DVD Burner.
If you wish to keep on using it after 7 days, you must register your copy.

The price for a single copy of Sateira CD&DVD Burner is only **\$35**.

One license per user.

One registered copy of Sateira CD&DVD Burner may be used by a single person.

Please try before you buy.

You can securely order your copy via:

ShareIt

<https://secure.element5.com/shareit/checkout.html?productid=193942>

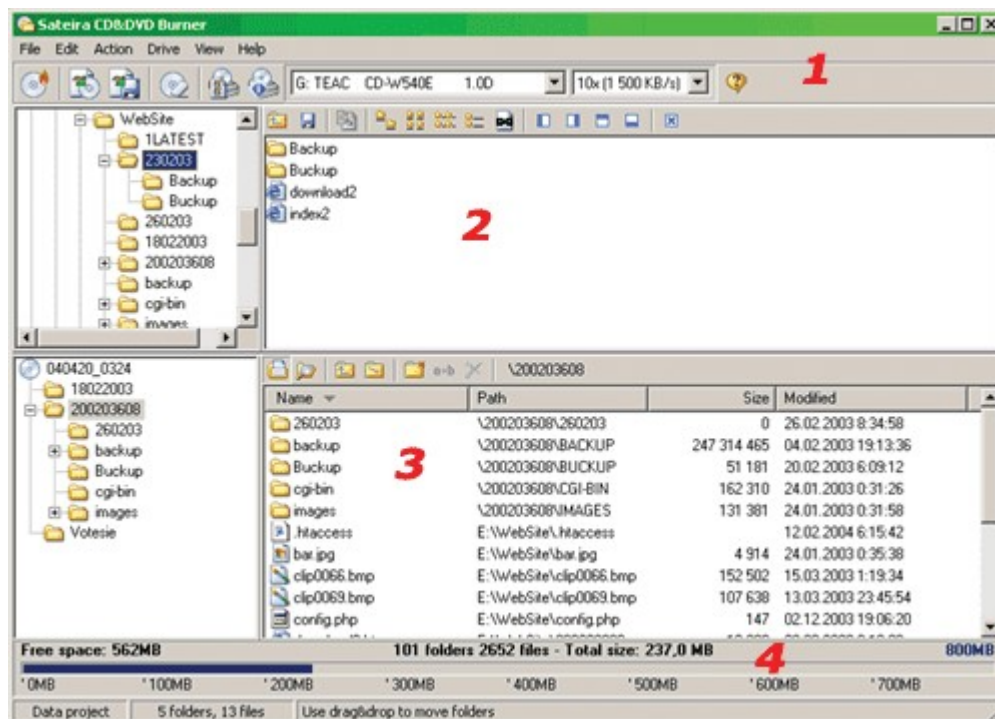
RegSoft

<http://www.regsoft.net/purchase.php3?productid=63589>

You can pay by Credit Card, Switch / Solo, Bank / Wire transfer, Check, Cash, Mail and Fax.

Your key will be delivered to you via email attachment (typically takes less than 24 hours).

For more information please email us to support@sateira.com or visit <http://www.sateira.com>



1. Toolbar. You can choose your recorder and burning speed.

Buttons:

- Burn disc
- Burn ISO image to disc
- Save ISO image
- Erase disc (quick)
- Burning options
- Recorder and disc information

2. Data panel. Here you can choose necessary files and folders and to drag them on disc layout. Blue buttons will allow you to arrange data panel from any side or to close data panel. Button "diskette" allows you to save the current way and to use it by default.

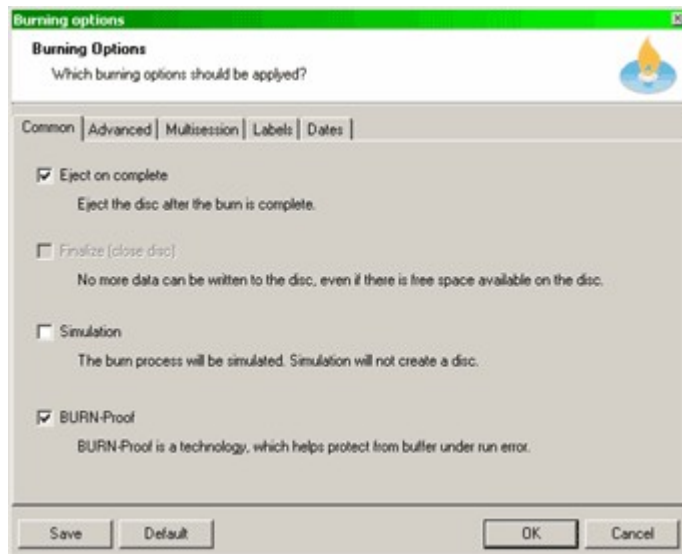
3. Disc layout editor. Here you can place files and folders in that kind they will be on a disc. You can create, delete or rename files and folders and also to move from one directory in another. On the right click the menu shows up. Using it you can start file or review its properties. Also you can sort a sheet by columns and look through contents of directories.

4. Status panel. Shows quantity of files and folders in layout, total size, free space and disc size.



To start data project just select **Data Project** from project select dialog and hit Start.

Create a data disc to store your personal file and folders.

**Buttons:**

- OK - close options dialog and apply options
- Cancel - close options dialog without apply
- Save - save options to registry and use it as default
- Default - restore default options

Common:

1. **Eject on complete** - eject the disc after the burn is complete
2. **Finalize (close disc)** - No more data can be written to the disc
3. **Simulation** - the burn process will be simulated, without actually physically writing any data to the disc
4. **BURN-Proof** - protect from buffer underrun errors

Advanced:

1. **Cache size** - memory cache size in MB
2. **Bootable** - disc or ISO image will be bootable. Need a boot image
3. **ISO9660** - files and folders will be converted to ISO9660 mode (8+3 characters)
4. **Perform Optimum Power Control** - power calibration test before burning

Multisession:

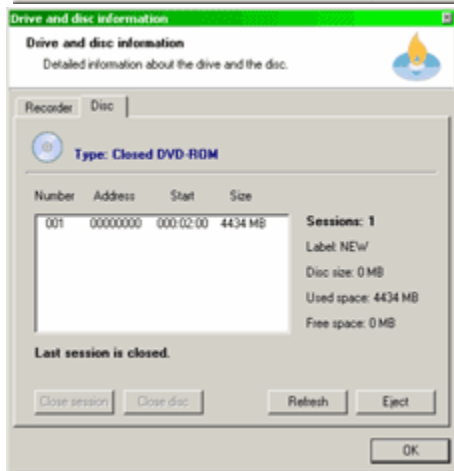
1. **Start multisession disc** - create a multisession disc
2. **Continue multisession disc** - import last burned session
3. **Load custom session** - import a custom session
4. **No multisession** - create and burn finalized disc
5. **Replace files in layout** - similar files in disc layout will be replaced from session

Labels:

1. **Disc label** - set disc label
2. Set additional labels (Application, Copyright...)


Dates:

Set creation, modification... dates



In this dialog you can view information about selected recorder and disc. Also you can view available sessions, close session and disc from Disc tab.

You can add data to disc layout by three ways:

1. **Drag&Drop** - select files and folders in built-in or windows explorer, drag it to disc layout and drop
2. **Paste** - select files and folders in built-in or windows explorer, rightclick on selection and choose copy. Then in Data Burner select Edit menu and click paste.
3. **Add data button** - select files and folders in built-in or windows explorer and hit .

Now you can [edit disc layout](#).

**Buttons:**

1. Show/hide built-in explorer
2. Run windows explorer
3. One level up. Go to parent folder
4. Go to root folder
5. Create a new folder
6. Rename selected file/folder
7. Delete selected files/folders

Popup menu (rightclick):

1. Select all
2. Find file - will open search dialog
3. Total size of selected - calculates data size of selected files/folders

You can anything in disc layout editor. It will NOT change original files and folders on your HDD.

Browse:

To browse in layout you can use keyboard or mouse. Hit Enter or doubleclick on any folder to enter it. Click on any folder in folder treeview to view folder's content.

Drag&Drop:

You can move data within disc layout editor. Select files and folders, drag them to some folder and drop. Data will be moved to selected folder.

NOTE: To change disc label just select first node in treeview and hit F2 or click rename selected.

NOTE: To change disc size rightclick and select an option to apply.



Drive and current write (maximum for inserted disc) speed automatically detected on startup.

Buttons:

1. Burn disc. Click to start a data disc burning process.
2. Burn ISO image to disc. Click to select ISO image and start burning process.
3. Save ISO image. Click to select ISO image name and save it.
4. Erase disc (quick). Click to erase disc in quick mode.
5. Burning options. Click to set burning options.
6. Recorder and disc information. Click to view.
7. Help. Open this help file.

File:

- You can save/load projects, set burning options, run explorer and close program

Edit:

- You can do everything like in [disc layout editor](#)

Action:

- You can do everything similar to [toolbar](#)
- Show confirmation messages option will ask you before burn (yes/no)

Drive:

- You can view [recorder and disc information](#), load / eject disc and set current drive as default

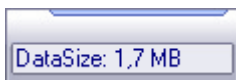
View:

- You can view log file and show/hide built-in explorer



To start DropToCD Lite just select **Fast Backup** from project select dialog and hit Start.

This is the easiest and fastest way to burn a data disc.



After start you'll see

Just drag&drop (or copy/paste) files and folders from explorer to this little window and hit Burn (from rightclick menu).

You can set some basic options from rightclick menu. Also you can move this window in any directions.



To start Image Burner just select **Image project** from project select dialog and hit Start.

Start program, select CUE/BIN/ISO image, select recorder and hit Burn. That's it.



To start Session Commander just select **Browse Sessions** from project select dialog and hit Start.

After start select drive from dropdown list and you'll see burned sessions.
You can extract files/folders or whole session.

1. Start program, choose Data Project or Fast Backup and hit Start
2. Prepare disc layout
3. Set necessary burning options
4. Hit **Burn disc**

1. Start program, choose Data Project and hit Start
2. Prepare disc layout
3. Set necessary burning options
4. On Advanced tab in options check bootable and choose boot image (*.img, *.image, *.iso)
NOTE: To create bootable image you have to use additional software like WinImage or WinISO.
5. Hit **Burn disc**

1. Start program, choose Data Project and hit Start
2. Set necessary burning options
3. On Multisession tab in options select start multisession disc (if disc is blank) or continue multisession disc (if disc already has sessions).
Click 'load sessions' to fill list, check sessions to import and hit ok.
4. Prepare disc layout
5. Make necessary changes in layout
6. Hit **Burn disc**

1. Start program, choose Data Project or Fast Backup and hit Start
2. Prepare disc layout
3. Hit **Save ISO image**
4. Choose location and hit Save

1. Start program, choose Data Project or Fast Backup and hit Start
2. Prepare disc layout
3. Set necessary burning options
4. On Advanced in options tab check bootable and choose boot image (*.img, *.image, *.iso)
5. Hit **Burn ISO image to disc**
6. Select image file and hit Open

1. Q: My recorder is not recognized or speed is incorrect. What shall I do?

A: Try to rescan drives (Drive->Rescan->Internal/External Initialization) in both modes.

Please download wnaspi32.dll file from <http://www.sateira.com/wnaspi32.zip> and copy it to Sateira CD&DVD Burner folder.

2. Q: Why need simulation option?

A: Use this option to do a testburn and make sure that disc will be burned successfully.

3. Q: How do I restore original window sizes?

A: Please close program, go to registry (Start->Run, type regedit and hit enter), find [HKEY_CURRENT_USER\Software\Sateira\Sateira CDDVD Burner\Window] and delete window chapter.

4. Q: I successfully burned disc, but I can't view files and folders in windows explorer. What shall I do?

A: Please close program and eject disc. Please make sure that last session is NOT opened (Recorder and disc information->Disc tab). If it opened click close session.

5. Q: I received error message (illegal request (invalid field in CDB)). What does it mean?

A: If you received this error on completion this mean that disc was burned, but last session probably is open (you can close it from Recorder and disc information dialog). Also it could be disc error. Disc is closed, damaged...

6. Q: My trial is over. What shall I do to continue using your program?

A: You have to register your copy.

7. Q: How can I get a free trial of Sateira CD&DVD Burner?

A: You can always download latest version from our website.

8. Q: I would like to translate your program. How can I do this?

A: Please download english template from our website and translate scdb.lng file to your language.

9. Q: I lost my key. What shall I do?

A: Please contact us.

10. Q: I didn't find an answer on my question. What to do?

A: Just contact us and ask anything you want.



Release date: 24 december 2004

- [+] Added feature
- [*] Improved/changed feature
- [-] Bug fixed

- + Added 700MB value to sizebox
- * Improved Data Burner & Session commander
- Fixed sorting by size bug
- Some other bugfixes

Quick erase is like erasing the directory off of a floppy disc. The file data is still there, but since there's nothing pointing to it, the disc appears empty.

